



## TECHNICAL PANEL

OPERATING THEATRES TECHNICAL PANEL AND DIGITAL CONTROL PANEL

T E D I S E L  
M E D I C A L  
T E D I S E L  
M E D I C A L



Esperit Sant Hospital, Barcelona

## BASIC PANEL

The operating theatre technical panel is a product devised to centralise all the operating theatre controls in a technical panel, including electrical equipment, grounding busbar and equipotentiality and medicinal gases. It is manufactured to be fitted in operating theatre with front made of Corian, a recommended material for these areas due to their aseptic qualities.

The interior box is made of water-repellent DM sheet covered with polyrey pur-metal in mate aluminium.

The apertures for the insertion of control elements are cut with automated equipment provided with precision numerical control machinery.

Access to the technical panels may be carried out in two different ways, from inside and from outside the operating theatre: In the case of accessing it from the inside of the operating theatre, the technical panel will be accessed by folding doors. In the case of accessing from the outside of the operating theatre, it will be supplied with a single hinged door located on the rear side, accessible from the septic hall that only covers the negatoscope.

The control elements manufactured by Tedisel are made of polycarbonate sheet and membrane push- buttons, and are easily cleaned. We detail each one of them in the last pages of this catalogue.



## DESIGN

The configuration of the BASIC PANEL is with two doors, a top door that opens upwards and a lower door that opens downwards.

The panel's standard size is 1250 x 1500 x 200mm. The equipment components to be installed in each panel are specifically studied for each project although we may consider as standard the following components:

- Analogue clock, digital stop-watch, neatoscope, hands-free telephone, medicinal gases alarm, electrical alarm repeaters, negatoscope switch, chronometer control, electrical switches and redundant earth switches. Also, this model may incorporate a TFT screen no larger than 21" and a keyboard for medical use.

The medicinal gases sockets are installed in a completely independent compartment on the bottom half of the panel.

This panel is recommended for delivery rooms and minor surgery operating rooms.

## DETAILS





Clínica Ruber Internacional, Madrid.



# HERMES

The Digital panel has been designed to concentrate all operating theatre controls in one device. This is an advantage to avoid using electronic cards and substitute their functions through a touch screen.

## VERSATILITY

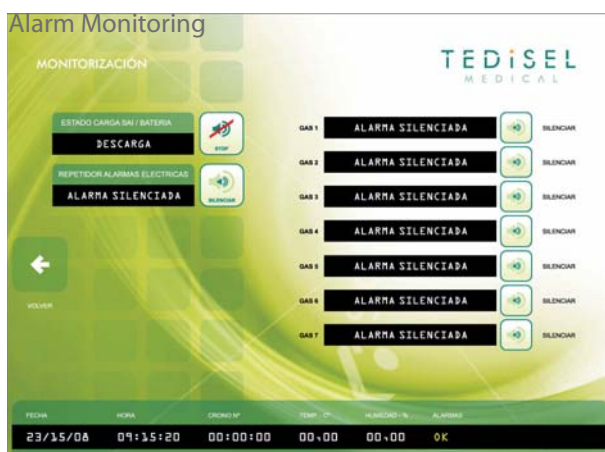
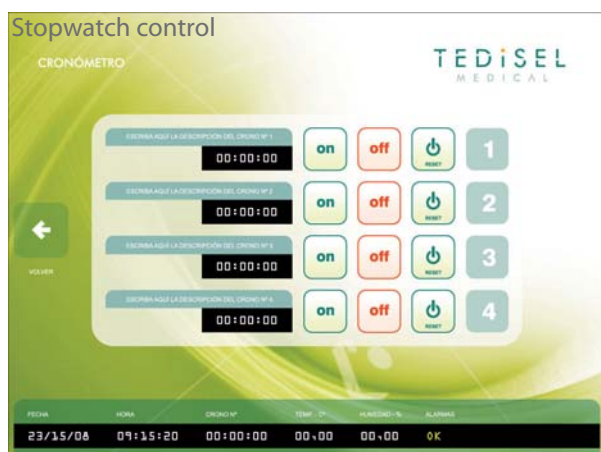
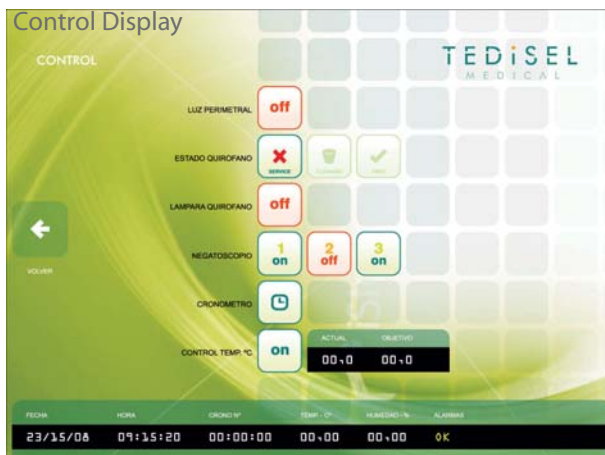
- Integrated in the operation theatre technical panel
- Its design permits new functions to be integrated without any physical modification in the panel
- Important reduction of mechanized parts in the front side of the panel.

## FLEXIBILITY

- Availability of touch screens up to 21"
- Ease of operation through touch screen
- Possibility to net connection through a PC

## SECURITY

- Restricted access for configuration in order to guarantee system security
- Avoids any error coming from the electronic cards
- Devices management single access point





Hospital de San Pedro, Logroño.

## DETAILS





Hospital de la Vall d'Hebrón, Barcelona





Clínica Ruber Juan Bravo, Madrid.

## DETAILS



# ELECTRICAL PLATES

Metallic recessed box with stainless steel front cover which contains ground unit bar connection, electrical and earthing outlets.

Units recommended for surgical and intensive care areas.



## PL 740

Equipment:

4 Electrical outlets 16A (schuko type)

4 Earthing outlets

Ground unit bar connection

Box size: 260 x 210 x 50mm



## PL 760

Equipment:

6 Electrical outlets 16A (schuko type)

4 Earthing outlets

Ground unit bar connection

Box size: 380 x 210 x 50mm



## PL 760 RP

Equipment:

1 Electrical alarm repeater TDS 149

6 Electrical outlets 16A (schuko type)

4 Earthing outlets

Ground unit bar connection

Box size: 380 x 210 x 50mm



## PL 760 RX

Equipment:

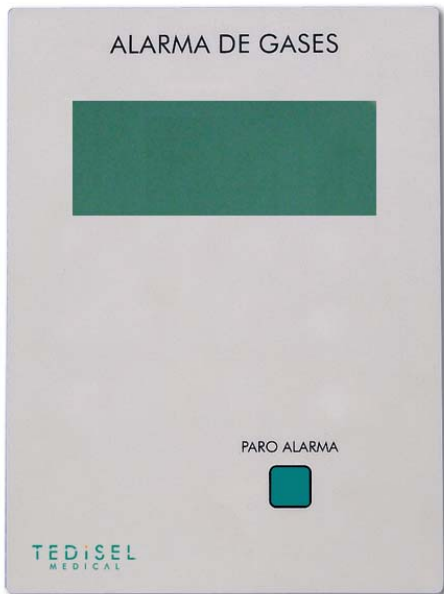
1 RX socket 20A

6 Electrical outlets 16A (schuko type)

4 Earthing outlets

Ground unit bar connection

Box size: 380 x 210 x 50mm

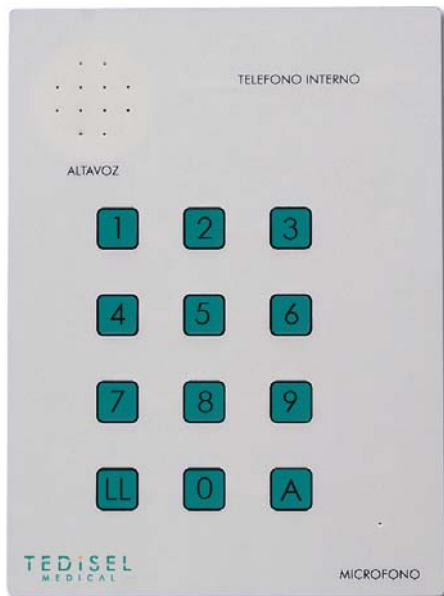


# ACCESORIES

## TDS 144

### Medicinal gases alarm

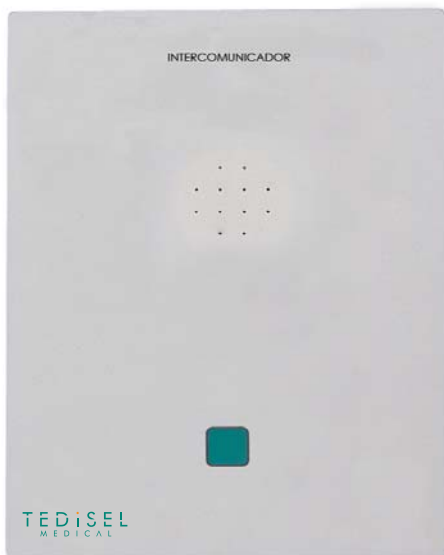
- Set to control up to 7 pressures of medicinal gases
- Manufactured in polycarbonate plate with LCD display to view information.
- Provided with alarm signalling in display, buzzer and acoustic alarm stop button.
- Connection to voltage free field elements, both in N/A and in N/C.



## TDS 145

### Telephone

- Front piece with polycarbonate plate and membrane push-buttons
- Hands-free operation
- Telephone network supply



## TDS 150

### Intercom

- Intercom substation mounted on panel front with polycarbonate plate and membrane push-button
- OPTIMUS system, model NA/NE
- Hands-free operation.



## TDS 142

### SAI charge indicator

- Consists of silk-screen printed polycarbonate plate and two indicator leds
- 1 alarm stop button
- Acoustic alarm unload status



## TDS 145

### Control system for turning on perimeter light

- Consists of silk-screen printed polycarbonate plate and two switches
- Input voltage 24V CA



## TDS 147

### Control system for turning on negatoscope

- Consisting of silk-screen printed polycarbonate plate with switches for lighting of negatoscope bodies with their respective signalling leds
- Input voltage 24 V AC de alimentación 24V CA



## TDS 148

### Operating theatre status signalling

- Consists of silk-screen printed polycarbonate plate and three switches and their respective signalling leds to indicate the status of the operating theatre
- Input voltage 24 V AC



## TDS 155

### Battery charge indicator

- Composed of a silk-screened polycarbonate plate with two indicator leds to show the condition of the battery charge which supplies the operating room lamp
- Input voltage 24V AC



## TDS 500

### Stopwatch clock

- Stopwatch to be fitted with frame
- Input voltage 230 V CA
- Simultaneous function in stopwatch clock



## TDS 501

### Stopwatch clock remote control

- Consists of a silk-screened polycarbonate plate with three switches to activate the stopwatch clock modes
- Input voltage 24V CA

# STANDARD COLOURS

Corian type Septic mineral compact



Corian Seagrass



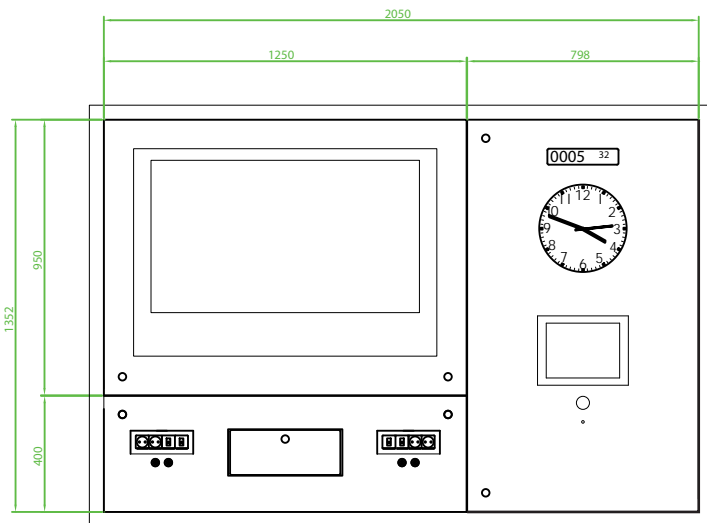
Corian Graphic Blue



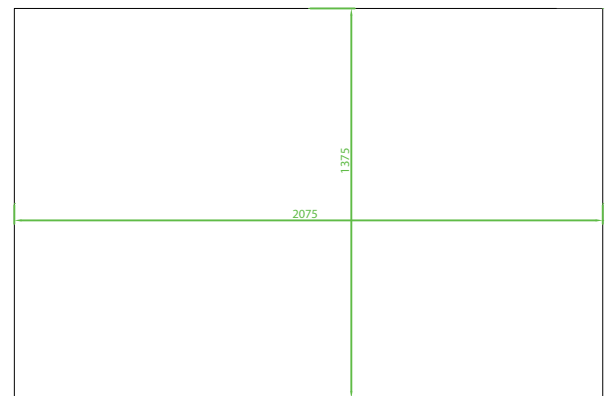
Corian Cameo White

There could be a difference between the real colour of the product and the example printed in the catalogue

---



Technical panel with HERMES, TV screen, medical keyboard and other accessories.



Built-in wall opening panel installation

---

## STANDARD

This product is manufactured following the standard applicable to medical devices, EN-ISO 11197:2004 and UNE-EN 60601-1:1990, regarding the Electromagnetic compatibility and Electrical Safety.

Tedisel Medical is certified as a manufacturing company of medical devices, following the quality management system of EN-ISO 13485:2003 standard.

---

● [www.tedisel.com](http://www.tedisel.com)